

# **62nd Annual New Jersey Concrete Awards Dinner**

**May 8, 2025  
The Heldrich  
New Brunswick, New Jersey**

**Sponsored by:  
The New Jersey Chapter of the  
American Concrete Institute  
&  
The New Jersey Construction  
Materials Association**



# 62<sup>nd</sup> ANNUAL

## NJ CONCRETE AWARDS DINNER

The New Jersey Construction Materials Association and the New Jersey Chapter of the American Concrete Institute are committed to increasing knowledge and promoting concrete quality. Proceeds from the Awards Dinner are distributed to both associations to further these industry goals.

Since 1964, the NJ Chapter of the American Concrete Institute and NJ's ready-mixed producers associations have honored the projects that best represent excellence in concept, originality, design and construction of structural concrete.

The Awards Committee encourages the submittal of all types of concrete projects. A panel of industry judges chooses Merit Award winners in various categories.

We then gather to pay tribute to these projects, and the participants who designed and built them, at the Annual Concrete Awards Dinner.

We wish to honor the past chairpersons of the Awards Committee. Without their diligent work we would not be celebrating our 62<sup>nd</sup> annual dinner.

Edwin W. Phillips .....	1964, 1965,	Raymond R. Johnson .....	1994
1966 Patrick W. Reardon .....	1967, 1968	Edward Kluckowski .....	1995, 1996
George L. Breen .....	1969, 1970	Jody Demas .....	1997 Louis
William M. Brooks .....	1971, 1972	DeMarco .....	1998, 1999
Walter R. Helpap .....	1973, 1974	Daniel Webber .....	2000, 2001
Joseph R. Wolf .....	1975, 1976	Mary Beth Kramer .....	2002
George Barton .....	1977	William F. Layton .....	2003
Frank W. Orleans & Edmund J. Smith .....	1978	Mark Wierciszewski .....	2004, 2005
William S. Phelan .....	1979, 1980	William F. Layton .....	2006, 2007
George Barton & Miles Rostek .....	1981	Rich Liptak & Lou Terletskii .....	2008
Miles Rostek .....	1982	Dianne Johnston .....	2009
Robert J. Demas .....	1983, 1984	Zach Rich .....	2010, 2011
Michael D. Mitschele .....	1985, 1986	Dianne Johnston .....	2012, 2013
William A. Costello .....	1987, 1988	William F. Layton .....	2014
Howard Gilbert .....	1989	Dara A. Servis .....	2015, 2016
Arnold G. Manville .....	1990, 1991	Joe Tedesco .....	2017–2022
Robert C. Jester .....	1992, 1993	Kyle England .....	2023
		Carli C. Haas.....	2024

## *Cocktail Hour Sponsors*

The NJ Construction Materials Association and the NJ Chapter of the American Concrete Institute wish to thank the following Cocktail Hour Sponsors for their generous support of the Annual Concrete Awards Dinner.

### PLATINUM SPONSORS

ANS CONSULTANTS

BRAEN STONE

BUZZI UNICEM

CONCRETE SYSTEMS

EUCLID CHEMICAL CORP.

FOLEY INCORPORATED

G&S INVESTORS

GEORGE HARMS CONSTRUCTION COMPANY

H B MELLOTT

K&L GATES

MAURER & SCOTT

MEN OF STEEL

RAIA CAPITAL MANAGEMENT

TANIS CONCRETE

T.G. BASILE

TILCON NY

WELDON MATERIALS

## *Cocktail Hour Sponsors*

The NJ Construction Materials Association and the NJ Chapter of the American Concrete Institute wish to thank the following Cocktail Hour Sponsors for their generous support of the Annual Concrete Awards Dinner.

### GOLD SPONSORS

BLACK ROCK INDUSTRIES  
COUNTY CONCRETE CORP.  
D'ANNUNZIO & SONS, INC.  
ROY ROCK, LLC  
SILVI MATERIALS  
SPARTA REDI-MIX  
STATE LINE CONSTRUCTION CO., INC.  
STAVOLA  
TITAN FORM WORKS  
UTCA  
XYPEX

### BLUE SPONSORS

CONSTRUCTION INFORMATION SYSTEMS  
CRISDEL GROUP, INC.  
CTS CEMENT  
PENNTEX CONSTRUCTION  
R.E. PIERSON MATERIALS  
TAYLOR OIL COMPANY  
ULMA FORMWORKS

# Grand Award



## NYS&W BIKE AND PEDESTRIAN SHARED USE PATH

WAYNE TOWNSHIP & PEQUANNOCK, NJ

OWNER / CLIENT:	MORRIS COUNTY
ENGINEER:	NV5
GENERAL CONTRACTOR:	NEW PRINCE CONCRETE
CONCRETE CONTRACTOR:	TANIS CONCRETE
READY-MIX CONCRETE SUPPLIER:	NEW PRINCE CONCRETE
CEMENT:	TITAN AMERICA ESSEX CEMENT
FINE AGGREGATE:	CLAYTON SAND
COARSE AGGREGATE:	TILCON NY
ADMIXTURES	SIKA CORP

## NYS&W BIKE AND PEDESTRIAN SHARED USE PATH

### WAYNE TOWNSHIP & PEQUANNOCK, NJ

The NYS&W Bicycle & Pedestrian Shared Use Path repurposed a portion of rail line previously owned by the New York, Susquehanna & Western Railway (NYS&W), a segment of which hadn't been used in over 30 years. The roughly 5-mile long path now serves as a transportation and recreation link for local residents, commuters, and visitors within the region.

This project incorporates multiple types of concrete which includes High Performance

Concrete (HPC), Ultra High-Performance Concrete (UHPC), Polyester Polymer Concrete Overlay (self-leveling resin mix), and Concrete Class P & B.

HPC concrete was used for the rehabilitation and retrofitting of an existing 285-foot railroad bridge over the Pompton River to carry a new 11-foot, 8-inch wide deck with an arch at the center. This bridge consists of three spans and required the concrete to be pumped from each abutment to reach the bridge's center. In addition, HPC was used for the erection of a new 34-foot prefabricated bridge that spans Packanack Brook. This deck transitions to two cast in place abutments on each side which contained a total of eight concrete filled steel pipe piles.

The footbridge is situated roughly midway through a 2,150-foot pre-cast elevated boardwalk. UHPC was used as the closure pour to tie the concrete filled steel piles into the precast concrete pier caps in the elevated deck section. This mix consisted of a cementitious blend, chemical additives and steel fiber.

The Polyester Polymer Concrete was used on top of the precast concrete pier caps to match the finished elevations of the two adjoining precast concrete slabs. Class P concrete was incorporated within all precast units on the job. There were 147 precast concrete pier caps and 150 precast concrete slabs to make up the precast elevated walkway totaling 2,040 feet. The elevated walkway consists of precast concrete slabs that rest on precast concrete pier caps. These pier caps sit on concrete filled pipe piles driven 30-feet to 35-feet into the ground.



*Steve Crevani Sr.*

*Forsa Construction*

Steve Crevani Sr. started his career at the early age of twelve spending his summers and school breaks working for his uncle and father's company, Alba Contractors-Beach Concrete. He studied construction design at Wagner College as he continued working. He mastered every skill required for construction from layout engineering, to operating heavy equipment. By the time he was twenty-two, he was Superintendent of high-rise projects.

A few years after marrying his school sweetheart Carole, he started his own company in 1970, Aniero Concrete, at the age of twenty-eight. It didn't take long before Aniero Concrete became the largest concrete contractor in Northern New Jersey. Steve Sr.'s portfolio covered industrial, post tension, heavy building construction, and many pharmaceutical projects.

During the late seventies and early eighties, Aniero built the majority of high rises that align Prospect Ave in Hackensack, including World Plaza Towers, The Carlyle, The Pierre, Excelsior, as well as expansions to Hackensack Hospital. In the eighties, as the developers started to test the waters in Jersey City, it was Aniero Concrete trusted with kicking off their first projects, including the LeFrak Organization's Journal Square and parking garages.

Steve Sr. was so driven, it was not unusual to have four projects simultaneously, employing as many as five hundred union tradesmen. Even more impressive, during his career Steve raised five children, was one of the founders of Bank of NJ, started his own standardbred farm, where he continues breeding, training, and harness racing today.

Chances are if you work, live, or just pass by a concrete structure built in the seventies and eighties, Steve Crevani Sr. had something to do with it.



*Steve Crevani Jr.*  
*Forsa Construction*

Steve Crevani Jr., started working in construction at the age of thirteen, “fetching” coffee for the crews. He worked a newspaper route in the early mornings and worked his way around the projects during his summer and school breaks.

Following the same work ethic his father instilled at a young age, Steve Jr. earned a football scholarship at the University of New Hampshire. Shortly after graduation, he returned to his father’s company, Aniero Concrete, to begin his career in concrete construction. In 1995, at the age of 28, Steve started Forsa Construction, with the support of his father.

Despite the construction stand-still in the mid-nineties, Steve found his first job building the Trenton Dewatering Facility, where Silvi Concrete was Forsa’s very first concrete supplier. Determined to succeed, Steve was on the road every day by four am, often with a five-hour commute. His hard work paid off, and soon after Forsa became so busy, Steve Sr. paused his own retirement to help with Forsa’s earlier high rises.

A reputation for safety, with EMRs as low as .445, quality, and serving clients has become Steve Jr’s mission. Determination like no other; he has an uncanny ability to overcome any obstacle or challenge thrown his way whether it is providing value engineering to a developer or recognizing his own challenges to overcome.

Forsa has produced every project in Steve’s 30-year history, ahead of schedule. Yet, his greatest accomplishment to date is perhaps his ability to work side by side with his wife, Kris, all these years, forming the ultimate team, raising their five children. Their family has always been their priority and greatest reward is now enjoying their second grandchild.

# *In Memorium*

DAVID "DAVE" DOBBINS  
RALPH CLAYTON & SONS  
1962 – 2025

IN THE EARLY MORNING OF JANUARY 2, 2025, DAVID "DAVE" DOBBINS, 63, BELOVED FATHER AND BROTHER, OF NEW EGYPT, SUCCUMBED TO HIS LENGTHY BATTLE WITH ESSENTIAL THROMBOCYTHEMIA AND ACUTE MYELOID LEUKEMIA (AML).

DAVE WILL BE TRULY MISSED FOR HIS DEDICATION, PASSION, CONTRIBUTION AND KNOWLEDGE TO THE CONCRETE INDUSTRY.

DR. KAMIL SOR  
FOUNDER, SOR TESTING LABS  
FOUNDER, SOR CONSULTING ENGINEERS  
1979-1980 PRESIDENT NEW JERSEY CHAPTER ACI  
1984-1985 TREASURER AND DIRECTOR NJACI  
1927-2024

DR. SOR, A DECORATED VETERAN OF THE KOREAN WAR WHO EARNED A BRONZE STAR FROM THE UNITED STATES ARMY, WAS A VISIONARY IN CONSTRUCTION MATERIALS TESTING. AS THE FOUNDER AND PRESIDENT OF SOR TESTING LABORATORIES IN 1976, HE ESTABLISHED ONE OF THE FIRST LABORATORIES ACCREDITED BY AASHTO AND THE U.S. ARMY CORPS OF ENGINEERS, WHICH SERVED AS A PRECURSOR TO TODAY'S SPECIAL INSPECTION AGENCIES. HIS LEADERSHIP EXTENDED TO THE NEW JERSEY CHAPTER OF THE AMERICAN CONCRETE INSTITUTE (ACI), WHERE HE WAS A FOUNDING MEMBER AND SERVED AS PRESIDENT (1979-1980), AS WELL AS TREASURER AND DIRECTOR (1984-1985). HE IS SURVIVED BY HIS WIFE AND TWO SONS. HIS ELDEST SON IS SUCCESSFULLY CONTINUING HIS WORK AT SOR TESTING LABS.

JAMES H. PASCH, SR.  
WELDON MATERIALS  
LIFETIME ACHIEVEMENT AWARD FROM THE NEW JERSEY CHAPTER OF NJACI  
1933 – 2024

JIM HAD A 20-YEAR CAREER AT WELDON MATERIALS AFTER HE SERVED IN THE AIR FORCE FROM 1950-1954, DOING A TOUR OF DUTY IN THE KOREAN CONFLICT. HE WAS A VOTING MEMBER OF THE SOCIETY OF TESTING MATERIALS FOR OVER 30 YEARS, A PAST MEMBER OF THE AMERICAN CONCRETE INSTITUTE, AND SERVED AS CHAIRMAN OF THE TECHNICAL COMMITTEE OF THE N.J. CRUSHED STONE ASSOCIATION.

## Congratulations Dad !

Thank you for building a “foundation” stronger than concrete and reminding us we are all a construction site in progress. Projects will not always go according to plan, we can change the plan, not our goals. You are more than a generational builder, you are building generations.



Courtney, Matt, Tate, Kelly, Katie, Emily, Steve Jr., Kris, and Stephen

**Congratulations to:  
Steve Crevani Sr.,  
&  
Steve Crevani Jr.**

**Weldon Concrete Co.**



**EST. 1898**

**SERVING THE CONSTRUCTION INDUSTRY  
WITH INTEGRITY AND PRIDE SINCE 1898**

**CONCRETE • ASPHALT • STONE**

**908-233-4444**

[www.weldonmat.com](http://www.weldonmat.com)



## 62nd Annual New Jersey Concrete Awards

**Congratulations to:**  
**Steve Crevani Sr, & Steve Crevani Jr.**  
*Forsa Construction*

Northeast Remsco Construction is a heavy civil contractor specializing in:

- Construction and Upgrading of Water and Wastewater Treatment Plants
- Trenchless Tunneling Techniques
- Horizontal Directional Drilling
- Underground Utility Construction

**[northeastremSCO.com](http://northeastremSCO.com)**

**732-557-6100**





**NEW JERSEY CHAPTER**  
AMERICAN CONCRETE INSTITUTE



## The New Jersey Chapter ACI

wishes to acknowledge and express our gratitude to

## SRM CONCRETE

for promoting quality in the concrete industry by providing their facility to the New Jersey Chapter to train industry staff to properly test and inspect concrete and provide ACI certification.

# THANK YOU



for your participation in this effort  
promoting quality concrete





**GENERAL CONTRACTORS**

Furino and Sons, located in Central New Jersey, works to provide our clients with a level of service and support that differentiates us from our competitors.

- Affiliated with 15 Union/Trade in New Jersey
- Over 300 Employees
- Own, Maintain and operate a fleet of heavy construction equipment
- Privately held with a team-oriented organization
- Maintain a safe and clean work site.
- Over 80% of our clients represent repeat business.
- Long affiliation with respected subcontractors allowing for all-inclusive contracts

We pride our selves on assisting our clients in formulating project goals. Our expertise contributes to the overall acceleration of schedules and cost control.

**1925 ~ CELEBRATING 100 YEARS! ~ 2025**



- Heavy Construction
- Utility Upgrades
- Process Piping
- Interior Fit Out
- Plant Maintenance & Upgrades
- Masonry
- Concrete
- Electrical Upgrades & Distribution
- Site Work
- Structural Steel
- Energy
- Water
- Sewer
- Solar

Congratulations to this years NJACI Honorees!

Steve Crevani Sr.  
&  
Steve Crevani Jr.

Furino & Sons, Inc  
66 Columbia Rd,  
Branchburg, NJ 08869  
Phone: 908-756-7736  
[www.furinoandsons.com](http://www.furinoandsons.com)

## *Merit Award—Athletic Facility*



### FIELD UPGRADES AT TINTON FALLS MIDDLE SCHOOL

TINTON FALLS, NJ

OWNER / CLIENT:	TINTON FALLS BOARD OF EDUCATION
ARCHITECT:	SPIEZLE ARCHITECTURAL GROUP
GENERAL CONTRACTOR	PRECISE CONSTRUCTION, INC.
CONCRETE SUPPLIER:	RALPH CLAYTON & SONS

## *Merit Award—Athletic Facility*

### FIELD UPGRADES AT TINTON FALLS MIDDLE SCHOOL

TINTON FALLS, NJ

This \$1.15 million project contained standard sitework including drainage; grading; sod; fencing and tree removal, along with concrete work and ball field upgrades.

The concrete work consisted of precast concrete retaining walls; cast-in-place stairs; an amphitheater and walks; concrete pads and footings; and concrete athletic courts. The field work consisted of upgrading one baseball field and one softball field along with installing bleachers, dugouts, backstops, foul poles, and signage.

Two unique features of the project were the colored textured concrete and the precast concrete modular block walls. The cast-in-place concrete was placed utilizing pump trucks and boom.

The challenges to the concrete portions of the project were working while school was in session and pouring during the winter months in order to be ready for the spring sports season.

*Merit Award—Concrete Pavement*



**MONTROSE 287 LOGISTICS PERVIOUS PAVING**

**SOUTH PLAINFIELD, NJ**

**OWNER/ CLIENT**

**BROOKFIELD**

**ARCHITECT & ENGINEER:**

**JARMEL KIZEL**

**GENERAL CONTRACTOR:**

**PREMIER DESIGN BUILD**

**CONCRETE CONTRACTOR:**

**PORCHETTA LAND & SITE, LLC**

**READY-MIX CONCRETE SUPPLIER:**

**SILVI MATERIALS**

## *Merit Award—Concrete Pavement*

### MONTROSE 287 LOGISTICS PERVIOUS PAVING

SOUTH PLAINFIELD, NJ

The project consisted of exterior paving at a new warehouse facility. Placing the pervious concrete presented challenges such as maintaining proper mix consistency, ensuring uniform compaction, and controlling water content to avoid clogging the pores. The mix is more sensitive to moisture and requires prompt finishing to prevent premature drying. Additionally, achieving the right balance between permeability and strength can be difficult, and specialized equipment is needed for placement and curing, making the process more labor-intensive and time-sensitive.

Approximately 30,000 square feet of pervious paving with 600 cubic yards of concrete from a batch plant less than 1 mile away involved efficient logistics to ensure timely delivery and proper placement.

Placing pervious concrete typically requires a combination of roller and manual labor. A roller helps evenly distribute and compact the mix, ensuring consistent surface texture and permeability. Manpower is essential for quick, precise placement, finishing, and controlling the concrete before it sets. Workers help spread, level, and finish the surface, ensuring proper curing and minimizing the risk of premature drying or clogging of the porous surface.

## *Merit Award—Construction Challenges*



### TAC-PAL LOGISTICS CENTER

PALMYRA, NJ

OWNER / CLIENT

SANSONE GROUP

ARCHITECT:

ARCO DESIGN BUILD

ENGINEER:

HAMMER LAND ENGINEERING

GENERAL CONTRACTOR

ARCO DESIGN BUILD

CONCRETE CONTRACTOR:

FORCINE CONCRETE &  
CONSTRUCTION CO.

READY-MIX CONCRETE SUPPLIER:

SILVI MATERIALS

## *Merit Award—Construction Challenges*

### TAC-PAL LOGISTICS CENTER

PAYLMYRA, NJ

Concrete was used to pour footings, slab on grade, loading docks, and exterior aprons. The total footprint of the project was 175,000 square feet.

No trucks were allowed to ride on slab, so concrete had to be pumped hundreds of feet with line dragons and multiple pumps on site. A total of over 25,000 cubic yards of concrete was utilized. The concrete was finished like glass with no defects.

The total project cost was over \$100 million.

*Merit Award—Cultural*



PRINCETON UNIVERSITY ART MUSEUM

PRINCETON, NJ

OWNER: PRINCETON UNIVERSITY  
ARCHITECT: ADJAYE ASSOCIATES  
ENGINEER: SILMAN  
GENERAL CONTRACTOR: LF DRISCOLL CO.  
CONCRETE CONTRACTOR: MADISON CONCRETE CONSTRUCTION  
READY-MIX CONCRETE SUPPLIER: CLAYTON CONCRETE

## *Merit Award—Cultural*

### PRINCETON UNIVERSITY ART MUSEUM

PRINCETON, NJ

Concrete was used for the footings, mat foundations, foundation walls, structural beams and slabs, structural stairs, slabs on grade, slabs on deck, exterior benches, paving, and retaining walls.

The structural system was a hybrid of both concrete and structural steel. The two systems were reliant on each other, which demanded extensive coordination of connection points, encasements of steel members, logistics, and sequence of construction. Coordination, location, and placement of embedded electrical and mechanical fixtures in exposed, sandblasted surfaces was critical to executing the design requirements.

The structural concrete work consisted of over 12,000 cubic yards of concrete and 700 tons of reinforcing steel. A total of 200,000 square feet of flatwork combined in slab on grade and slabs on metal deck. The project consisted of over 60,000 square feet of exposed, heavily sandblasted concrete surfaces for maximum aggregate exposure. A "ground & honed" finish was also utilized on several elements such as benches and tops of walls. Extensive coordination of form panels, pour joints, and embedded items was critical to the design. Multiple mockups allowed the design team and contractors to fine tune the aesthetics of the project.

*Merit Award—Decorative / Street Scape*



IMPROVEMENTS TO ROOSEVELT AVENUE

CARTERET, NJ

OWNER / CLIENT:

MIDDLESEX COUNTY

ENGINEER:

FRENCH & PARRELLO ASSOCIATES

GENERAL CONTRACTOR:

LUCAS BROTHERS, INC.

CONCRETE CONTRACTOR:

S. BATATA CONSTRUCTION

READY-MIX CONCRETE SUPPLIER:

RALPH CLAYTON & SONS

## *Merit Award—Decorative / Street Scape*

### IMPROVEMENTS TO ROOSEVELT AVENUE

#### CARTERET, NJ

The project consisted of the full replacement of two existing traffic signals, roadway resurfacing, new signing and striping, and replacement of sidewalks in decorative stamped concrete with curb ramps for ADA compliance. The improvements were to two Roosevelt Avenue intersections, the Wedgewood Road/New Jersey Turnpike Ramp and Industrial Road/Harrison Avenue.

The end of the existing concrete parapet leading to the New Jersey Turnpike ramp was modified to accommodate new MASH compliant guiderail. Because of the close proximity of the intersections to each other and the Turnpike ramps, a detailed traffic analysis was completed to develop a coordinated traffic signal timing between the signals to avoid delays along the corridor and onto the Turnpike.

Decorative stamped concrete sidewalks were used to match the Carteret Borough streetscape to create a gateway to the community.

The scope of work included earthwork, sub-base and base courses, utilities and associated landscaping at a total cost of \$3,180,180.

*Merit Award—Educational*



**RED BANK MIDDLE SCHOOL IMPROVEMENTS**

**RED BANK, NJ**

**OWNER / CLIENT**

**RED BANK BOROUGH SCHOOL DISTRICT**

**ARCHITECT:**

**SPIEZLE ARCHITECTURAL GROUP**

**GENERAL CONTRACTOR:**

**PRECISE CONSTRUCTION, INC.**

**READY-MIX CONCRETE SUPPLIER:**

**RALPH CLAYTON & SONS**

*Merit Award—Educational*

RED BANK MIDDLE SCHOOL IMPROVEMENTS

RED BANK, NJ

The project entailed the construction of a multipurpose athletic complex which included segmental block retaining walls; an amphitheater; a maintenance building; a pavilion; and athletic courts, along with standard sitework such as drainage, irrigation systems, sight amenities, fencing, and landscaping.

Concrete work included sidewalks, curbs, retaining walls, amphitheater stairs and walls, sidewalks, concrete pads, and footings. The concrete portions of this project were challenging as they were performed during the winter months to have it completed by March for the baseball season. Access was very limited due to field conditions.

The project featured unique precast modular block walls and cost \$2,216,604.

*Merit Award—Innovative*



PRESTRESS CONCRETE WATER TANK

WALL TOWNSHIP, NJ

OWNER / CLIENT:	WALL TOWNSHIP
ARCHITECT & ENGINEER:	H2M
GENERAL CONTRACTOR:	PRELOAD PRESTRESSED TANKS
CONCRETE CONTRACTOR:	PRELOAD PRESTRESSED TANKS
READY-MIX CONCRETE SUPPLIER:	CLAYTON CONCRETE

## *Merit Award—Innovative*

### PRESTRESS CONCRETE WATER TANK

WALL TOWNSHIP, NJ

The tank wall was constructed using precast wall panel fabrication and erection techniques. Tank wall panels are precast on-site around the perimeter of the tank. Panels are constructed through an efficient stack-casting process in casting beds shaped to the curvature of the tank wall. Before casting panels, a layout is prepared to show the panel bed locations relative to the tank structure. This method of construction is highly adaptable to any site condition.

An exterior shotcrete cover coat is applied to the tank wall. This step is accomplished through a pneumatic shotcreting process to cover the steel diaphragm and each prestressing wire.

The final surface of the tank, known as the finish coat, is architecturally finished by applying either a natural gun or a steel-troweled finish to produce a durable and aesthetically-pleasing tank structure.

The unique process of single-wire, circumferential prestressing is applied to the exterior of the wall. This method places the entire tank wall into a state of permanent compression, preventing cracking and leaking under all service conditions.

The dome roof design is unmatched in its economy and durability. The design results in uniform compression throughout the spherical shell, allowing relatively thin concrete sections to span large tank diameters.

*Merit Award—Low Rise*



**THE RAYE BUILDING A**

**NEW BRUNSWICK, NJ**

<b>OWNER / CLIENT:</b>	<b>RUSSO DEVELOPMENT</b>
<b>ARCHITECT:</b>	<b>MINNO &amp; WASKO ARCHITECTS AND PLANNERS</b>
<b>ENGINEER:</b>	<b>PBA ENGINEERING</b>
<b>GENERAL CONTRACTOR:</b>	<b>RUSSO DEVELOPMENT</b>
<b>CONCRETE CONTRACTOR:</b>	<b>ROY ROCK, LLC</b>
<b>READY-MIX CONCRETE SUPPLIER:</b>	<b>SILVI MATERIALS</b>

## *Merit Award—Low Rise*

### THE RAYE BUILDING A

NEW BRUNSWICK, NJ

The Raye Building A is a 125,000-square-foot low-rise project that utilized over 3 million pounds of rebar and approximately 18,000 cubic yards of concrete. The building consists of five stories, with cast-in-place construction up to the second floor and a partial area on the third floor.

The main slab at the second-floor transfer deck is 12 inches thick and quite complex due to the amount of reinforcement required. It features drop panels, beams, balconies, and slab folds for various elevation transitions. This level was poured in five phases, totaling approximately 1,000 cubic yards each, with the largest single pour being 1,300 cubic yards.

The third floor and the clubhouse/lobby presented additional challenges. Seventeen round columns, ten of which are tilted or angled, support the second floor and continue at the same angle to support the third floor. These columns also support a slab that spans more than 60 feet, necessitating a cambered design to compensate for deflection. Some of the concrete in this area was specified to be architectural, so the finish had to be impeccable.

*Merit Award—Marine*



UP SMITH'S CREEK TIKI & UPLANDS MARINA PROJECT

WOODBRIDGE, NJ

OWNER / CLIENT:	WOODBRIDGE TOWNSHIP
ARCHITECT:	THE VAUGHN COLLABORATIVE, INC.
ENGINEER:	T&M ASSOCIATES
GENERAL CONTRACTOR	MCCAULEY CONSTRUCTION CO., INC.
CONCRETE CONTRACTOR:	K&R SITEWORK, INC.
READY-MIX CONCRETE SUPPLIER:	RALPH CLAYTON & SONS

*Merit Award—Marine*

UP SMITH'S CREEK TIKI & UPLANDS MARINA PROJECT

WOODBIDGE, NJ

Cast in place and decorative concrete was utilized for the fully functional Tiki Bar building. Site improvements included sidewalks, lighting, and utility connections as well as dredging of the marina basin, reconstruction of the majority of the bulkheads and docks.

The project cost a total of \$4,137,377 using 950 cubic yards of concrete of which 450 cubic yards was stamped decorative concrete.

The project looks great and there is a planned Sewaren Marina and Recreation Area to follow, which will include an expanded dog park, a dock and dine, and expanded parking.

*Merit Award—Mid Rise*



AQUAVIEW HARBOR STATION SOUTH

BAYONNE, NJ

OWNER / CLIENT: GAURI SHANKAR FLAGSHIP U.R., LLC

ARCHITECT: MINNO & WASKO ARCHITECTS AND PLANNERS

ENGINEER: JT ENGINEERING BUILDING SOLUTIONS

GENERAL CONTRACTOR: V. GUPTA & CO., INC.

CONCRETE CONTRACTOR: CONCRETE SYSTEMS, INC.

READY-MIX CONCRETE SUPPLIER: RICHMOND READY MIX

*Merit Award—Mid Rise*

AQUAVIEW HARBOR STATION SOUTH

BAYONNE, NJ

Aquaview Harbor Station was designed to provide residents with a harmonious blend of comfort, elegance and modernity. Concrete was used for the footings, walls, columns, slab on grade, structural slab on the second floor and the composite slab on the third floor.

The soil in the project area was unusually sandy which required extensive excavation during the foundation phase. Due to the soil conditions, fiber mesh was required in the slab on grade to satisfy the project specifications.

Concrete pumps, forms and shoring were used to effectively complete the project. In total, 3823 cubic yards of concrete was used.

*Merit Award—Mixed Use*



630 WASHINGTON AVENUE  
BELLEVILLE, NJ

OWNER / CLIENT:	RUSSO DEVELOPMENT
ARCHITECT:	MINNO & WASKO ARCHITECTS AND PLANNERS
ENGINEER:	PBA ENGINEERING
GENERAL CONTRACTOR:	RUSSO DEVELOPMENT
CONCRETE CONTRACTOR:	ROY ROCK, LLC
READY-MIX CONCRETE SUPPLIER:	TANIS CONCRETE

## *Merit Award—Mixed Use*

630 WASHINGTON AVENUE

BELLEVILLE, NJ

Concrete was used in this project to construct a three-story mixed use building with an area of 85,000 square feet per floor. In addition to the foundation, the floors were built with concrete slab on grade and two elevated slabs with drop panels and beams.

There is an additional slab on deck after the transfer deck with approximately 2400 cubic yards of lightweight concrete.

The first two floors are the parking garage with all concrete exposed including columns, walls and ceilings. The third floor finish varied depending on use, which included residential units and retail.

Overall, 21,000 cubic yards of concrete were used with approximately 1700 tons of rebar. A combination of cast-in-place and poured concrete was utilized in the \$12 million project.

# *Merit Award—Multi-Span Bridge*



## PARKWAY BRIDGE SUPERSTRUCTURE REPLACEMENT

MONMOUTH COUNTY , NJ

OWNER / CLIENT:	NEW JERSEY TURNPIKE AUTHORITY
ARCHITECT:	STANTEC
ENGINEER:	JACOBS ENGINEERING GROUP, INC.
GENERAL CONTRACTOR:	EARLE ASPHALT CO., INC.
CONCRETE CONTRACTOR:	EAC/BUERTO CONSTRUCTION, INC.
READY-MIX CONCRETE SUPPLIER:	SILVI MATERIALS

## *Merit Award—Multi-Span Bridge*

### PARKWAY BRIDGE SUPERSTRUCTURE REPLACEMENT

#### MONMOUTH COUNTY, NJ

This project consisted of the replacement of the Garden State Parkway (GSP) bridge superstructures in Monmouth County. Concrete was used for the bridge deck construction, bridge deck parapets, drainage pipes, catch basins, curbing to channelize water flow to catch basins, and spall repairs for the concrete abutments, deck, underdeck, piers and pre-cast I-Beams.

This \$24.1 million project required various mixes of concrete. Bridge decks, parapets, headblocks and median curb required 1,366 cubic yards of high performance concrete (HPC); bridge deck closure pours using ultra high performance concrete (UHPC) required 9 cubic yards; spall repairs for deck, under deck, piers and abutments required 809 square feet; and, precast concrete beam repairs on 13 beam ends required 26 cubic yards of bag mix.

Concrete was an obvious material choice during the selection for the replacement deck, and parapets. This material provides flexibility through the unique curve structures of the various ramp structures, while meeting specified performance requirements. Design characteristics including transitions in super-elevation and bridge deck cross slopes also led to the appropriate selection of reinforced concrete materials.

HPC was the mix design of choice for the bridge deck, due to its long-term service performance under static, dynamic, and fatigue loading along with UHPC. HPC provides higher resistance to the effects of freeze/thaw conditions and chemical attack, and there is significant improvement to long-term durability and crack propagation over traditional mixes. In addition, HPC precludes the need for a wearing surface, which reduces the project's life-cycle costs.

# *Merit Award—Municipal*



## REPLACEMENT OF LAKES CREEK BRIDGE

EGG HARBOR, NJ

OWNER / CLIENT: TOWNSHIP OF EGG HARBOR

ENGINEER: FRENCH & PARRELLO ASSOCIATES

GENERAL CONTRACTOR: SOUTH STATE, INC.

CONCRETE CONTRACTOR: PENN JERSEY BUILDING MATERIALS, CO., INC.

## *Merit Award—Municipal*

### REPLACEMENT OF LAKES CREEK BRIDGE

EGG HARBOR, NJ

Concrete was key to this project, with precast arches, wingwalls, box culverts, and retaining walls reducing construction time and wetland impact. Cast-in-place parapets met MASH TL-4 standards and added visual appeal. Concrete caps topped steel wingwalls. Across all elements, concrete provided durability, environmental sensitivity, and safety performance.

Challenges included poor soils, wetlands, traffic, and overhead utilities. Grout columns stabilized raised approaches. Precast components minimized wetland impact. A 5.5-mile detour ensured safety. Coordination with NJDEP, USACE, and Tidelands was required. Each hurdle was addressed through careful planning and adaptive design solutions.

The project cost \$7.9 million and included a 39.5-ft bridge with a 36-foot roadway and two 30-foot culverts. Roadways varied from 26 to 36 feet wide. The project used extensive precast and cast-in-place concrete throughout. The investment included bridge, culvert, and approach improvements.

The bridge features a cast-in-place open balustrade that meets safety standards while enhancing visual appeal. Smooth finishes, clean lines, and uniform elements at all three sites support a cohesive look. The low-profile design complements the scenic environment along Lakes Creek, maintaining aesthetic harmony with minimal disruption.

*Merit Award—Repair & Restoration*



NJ TURNPIKE BRIDGE DECK & MEDIAN RECONSTRUCTION  
KENILWORTH, NJ

OWNER: NEW JERSEY TURNPIKE AUTHORITY  
ARCHITECT: TRANSYSTEMS  
ENGINEER: GANNET FLEMING  
GENERAL & CONCRETE CONTRACTOR: JOSEPH M. SANZARI, INC.  
READY-MIX CONCRETE SUPPLIER: RICHMOND READY MIX

## *Merit Award—Repair & Restoration*

### NJ TURNPIKE BRIDGE DECK & MEDIAN RECONSTRUCTION

KENILWORTH, NJ

The project consisted of a total of 2300 cubic yards of concrete placed in the bridge deck and media barriers.

The bridge decks were High Early Strength High-Performance Concrete (HESHPC) which required coordination with Rutgers University, which provided guidance and collected data on the concrete throughout the project.

The job required no adjacent traffic for six hours after concrete placement and sensors were placed within the deck pours to ensure strength. Slip form placement was used to increase production via economies of scale.

The total project cost was \$48.3 million.

# *Merit Award—Short Span Bridge*



## REPLACEMENT OF SUSSEX COUNTY BRIDGE Q-6 SPARTA, NJ

OWNER / CLIENT: SUSSEX COUNTY  
ENGINEER: GREENMAN-PEDERSON, INC.  
GENERAL CONTRACTOR: STATE LINE CONSTRUCTION CO., INC  
CONCRETE CONTRACTOR: STATE LINE CONSTRUCTION CO., INC  
READY-MIX CONCRETE SUPPLIER: COUNTY CONCRETE CORP.

## *Merit Award—Short Span Bridge*

### REPLACEMENT OF SUSSEX COUNTY BRIDGE Q-6

SPARTA, NJ

The work to be performed for the Replacement of Sussex County Bridge Q-06, Main Street over Wallkill River includes the installation, maintenance, and removal of soil erosion and sediment control devices, as well as the installation, maintenance, and removal of maintenance and protection of stream flow devices for the relocation of the Newton Water main. Relocation of the Newton Water main itself was also required.

Extensive coordination with utilities was required, including accommodations for utility work such as aerial utility relocation, test pit location, and protection of underground utilities during construction. The project included the installation, maintenance, and removal of traffic protection devices associated with the vehicular detour, stagger operations, and lane/shoulder closures. It also required the installation, maintenance, and removal of a temporary pedestrian bridge.

The work entailed removal of existing structures, including abutments, wingwalls, steel stringers, concrete deck, parapets, and the adjacent pedestrian bridge. Temporary cofferdams had to be installed and maintained. The new construction involved a precast three-sided rigid frame and wingwalls supported on cast-in-place foundations, along with concrete curbing, sidewalks, parapets, a brick paver sidewalk, and the installation of beam guide rails and terminals.

Additionally, the project included the construction of trench drains at the adjacent Route 15 bridge abutment, the construction of approximately 80 feet of roadway with paving and striping, and the milling, paving, and striping of approximately 280 feet of roadway.

*Merit Award—Shotcrete*



ROSEVILLE TUNNEL REHABILITATION

BYRAM TOWNSHIP, NJ

OWNER / CLIENT: NEW JERSEY TRANSIT

ENGINEER: DELVE UNDERGROUND

GENERAL CONTRACTOR: SCHIAVONE CONSTRUCTION CORP.

CONCRETE CONTRACTOR: CRUZ CONCRETE & GUNITING REPAIR, INC.

READY-MIX CONCRETE SUPPLIER: SPARTA READYMIX

## *Merit Award—Shotcrete*

### ROSEVILLE TUNNEL REHABILITATION

BYRAM TOWNSHIP, NJ

Roseville Tunnel is a 997-foot long hard-rock blasted tunnel built in the early 1900's. Rail service was discontinued and the track returned back to nature. Rail service is expected to begin again in 2026. This project is intended to modernize the tunnel.

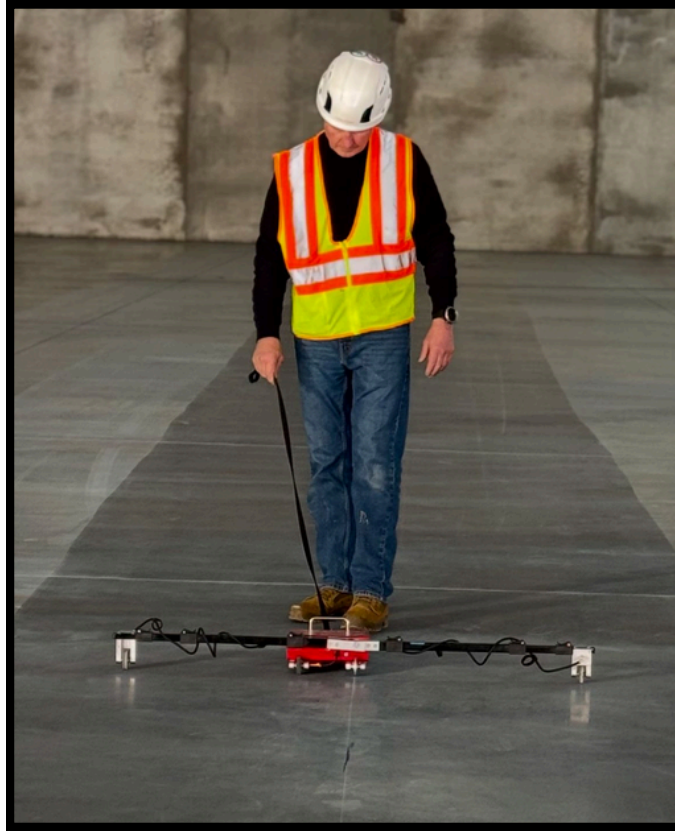
Approximately 2,000 cubic yards of macro-fiber reinforced concrete, and 3,000 cubic yards of micro-silica modified shotcrete were placed in the walls and arch of the tunnel.

Access was the greatest challenge to delivering the material. This project started in late fall and was completed in early winter. At times the concrete was delivered in sub-freezing conditions.

This phase of the project is not the final face of concrete – this scope is the structural aspect which will be hidden away below additional layers of concrete and materials. The smoothness criteria was set for one inch of variation in a 10-foot area. Extremely high tensile strengths and first-break considerations were specified. Tests like ASTM C1140 and C1604 were specified by the engineer.

All concrete for the initial tunnel support was constructed and applied with wet-mix shotcrete.

## *Merit Award—Warehouse*



### MCCLELLAN ONE F-MIN50 SUPER FLAT

NEWARK, NJ

OWNER:	CREATION EQUITY
ARCHITECT:	PRATT DESIGN STUDIO
ENGINEER:	HARRISON HAMNETT
FLOOR CONSULTANT:	STRUCTURAL SERVICES, INC
GENERAL CONTRACTOR:	PREMIER DESIGN BUILD
CONCRETE CONTRACTOR:	TURNER BROTHERS NJ
FMIN SUPER FLAT TESTING:	INDUSTRIAL SLAB SERVICES, LLC
READY-MIX CONCRETE SUPPLIER:	SILVI MATERIALS

## *Merit Award—Warehouse*

### MCCLELLAN ONE F-MIN50 SUPER FLAT

NEWARK, NJ

The project, delayed to mid-winter, faced concrete production challenges due to temperatures below 50°F. A heated building maintained the required temperature, and work began at 2 a.m. The floor specification changed to FMin50 Super Flat, requiring precise testing and strict temperature control. Despite snowstorms, changes in the racking plan, and quality standards, careful planning and execution ensured the floor's success and durability.

The project covered 121,000 square feet with a \$2 million budget, requiring 4,500 cubic yards of concrete (700 for foundations, 700 for the site, and 3,100 for the slab-on-grade). Concrete was placed in 25,000-square-foot sections, with 600 cubic yards per placement. The floor mix included a minimum Flex of 700 and a maximum shrinkage of 0.35%, ensuring the floor met strict durability and performance standards.

The project delivered one of the highest quality floors in the country, free from defects like delaminations and cracking. Despite challenging conditions, it met exceptional durability standards and required only half a day of grinding. The first-ever 100-foot double bay wide placement achieved outstanding Ff/FI readings, including Pour 2 at 143/78 and SOG Pour 5 with averages of 160/59, setting a new benchmark in concrete construction.

This project featured one of the first F-min Superflat floors spanning two bays (100 feet), a significant increase from typical 15-50 foot spans. Despite the increased risk of failing to meet strict tolerances, this design reduced construction costs by 50-75% and shortened the schedule from two months to three weeks. Innovative methods, like a "screed sled" and manual checks of formwork and laser screed heights, ensured precision, with guidance from six Nationally Recognized Floor Consultants.

Providing our customers with the finest level  
of service in the asphalt and concrete industry



**BLACK ROCK**  

---

---

**ENTERPRISES, LLC**

1316 Englishtown Road, Old Bridge, NJ 08857  
Phone: 732-967-6400/Fax: 732-967-6402  
[www.blackrocknj.com](http://www.blackrocknj.com)

Certified WBE



# GETS JOBS DONE.

For 120 years, Braen Stone has proudly made the materials that help build America.



CRUSHED STONE • SAND • ASPHALT • RECYCLED PRODUCTS  
973-742-ROCK • [www.braenstone.com](http://www.braenstone.com)

**Bricklayers and Allied Craftworkers  
Administrative District Council of New Jersey  
Locals No. 4 & 5**

3281 Route 206  
Bordentown, NJ 08505

Office (609) 324-9681  
Fax (609) 324-9685

**John F. Capo**  
**Director**



**Leon Jones Jr.**  
**Sec. / Treas.**

**BAC Local No. 4**

Kenneth Simone  
**President**

Ronald Green  
**Recording Secretary**

Leroy Sanpedro  
**1<sup>st</sup> Vice President**

Michael Fasulo  
**2<sup>nd</sup> Vice President**

**BAC Local No. 5**

Lynn Canfield  
**President**

Mario Cerrito  
**Recording Secretary**

Scott Senese  
**1<sup>st</sup> Vice President**

Jeffery Burner  
**2<sup>nd</sup> Vice President**

Jeff Burner  
Robson DeSiqueira  
**Organizer's**

Michael Fasulo  
**Field Representative**

**[www.bacnj.com](http://www.bacnj.com)**

*Congratulations to the Honorees:*

STEVE CREVANI SR. · ANIERO CONCRETE INC.  
STEVE CREVANI JR. · FORSA CONSTRUCTION LLC



**CONCRETE SYSTEMS**



**CS CONCRETE SYSTEMS PUMPING**  
RENTALS | LEASING AVAILABLE

110 PARIS STREET  
NEWARK, NJ 07105

**973.817.8181**  
[www.concretesystemsinc.com](http://www.concretesystemsinc.com)



**Built on a culture of pride, we are committed to being an industry-leading family business, delivering quality products and services at the greatest value for our customers through innovation, organization, and hard work.**



Scan me!



**EarleCo.com**



**READY ON DAY 1**

*ELEC825 New Jersey would like to congratulate Forsa Construction on their industry recognition of delivering award-winning projects at the 62nd Annual New Jersey Concrete Awards.*

*ELEC825 ensures that Local 825 Operating Engineers are the most highly skilled, most expertly trained and most credentialed heavy equipment operators.*



@ELEC825  
[www.ELEC825.org](http://www.ELEC825.org)

*ELEC825 is the labor management fund  
of Operating Engineers Local 825*

# George Harms Construction Co., Inc.

Is proud to congratulate

STEVE CREVANI

STEVE CREVANI JR.

Owner

Forsa Construction, LLC

And

All Concrete Award Winners

BUILDING NEW JERSEY THE AMERICAN WAY



# CONGRATULATIONS

to the

## 2025 NJACI AWARD WINNERS!

from...

**madison**  
concrete construction

130 Quaker Lane, Malvern, PA / 610.695.8800 / [www.madisonconcrete.com](http://www.madisonconcrete.com)

*From pre-construction to final pour, Madison delivers the highest quality concrete construction, focused on safety, schedule, and budget.*

*Serving the Greater Delaware Valley region since 1969, we have forged strong relationships with the area's general contractors to provide quality concrete construction for businesses ranging from hospitals, educational institutions, developers, sports teams, and more.*

### ***Our Mission Statement:***

*To consistently provide superior quality concrete construction, in a safe environment, with a reputation for honesty, integrity, and responsiveness to our clients, vendors, and employees.*





# BUILDING BETTER

At Penntex Construction, **Building Better** is the mantra we live by to deliver outstanding work through an exceptional experience. This commitment extends to the communities we serve. We are proud to be a part of New Jersey's thriving construction industry.

Design-Build ▪ Preconstruction ▪ Construction Management  
General Construction ▪ Renovations & Interiors

610.834.1560  
[penntexconstruction.com](http://penntexconstruction.com)

**PENNTEX**  
CONSTRUCTION



## Congratulations to all the 62nd Annual New Jersey Concrete Award Winners

**PETILLO**  
LLC

FLANDERS

**PETILLO**  
NEW YORK LLC

MIDDLETOWN

**PETILLO**  
*Maryland* LLC

BRANDYWINE

**PETILLO COMPANIES** is a full service site work and heavy highway construction company serving the Northeastern United States.



Site Excavation



Water Management & Distribution



Utilities



Asphalt Paving



Erosion Control & Retaining Walls



Concrete



**SINCE 1947**



**OUR COMMITMENT TO  
EXCELLENCE IS CONCRETE**

[silvi.com](http://silvi.com)



**AN ARCOSA COMPANY**

**CORPORATE OFFICE: 175 DRIFT ROAD, TINTON FALLS, NJ 07724**  
**732-542-2328 STAVOLA.COM**



**CONSTRUCTION MATERIALS  
ASPHALT AND RECYCLING  
CONTRACTING**

**ASPHALT: Bound Brook Asphalt/Recycle • Brick Asphalt • Flemington Asphalt • Howell Asphalt • Millstone Asphalt  
Newark Asphalt • Old Bridge Asphalt/Recycle • Tinton Falls Asphalt/Recycle • Hillsborough Asphalt  
AGGREGATE: Bound Brook Quarry • Oldwick Quarry • Beaver Run Quarry • Summit Quarry (PA)**



A CRH COMPANY

# AGGREGATE ASPHALT CONSTRUCTION RECYCLE

Operating quarries,  
asphalt plants,  
material recycling  
facilities & offering  
road paving services  
to our local  
communities!

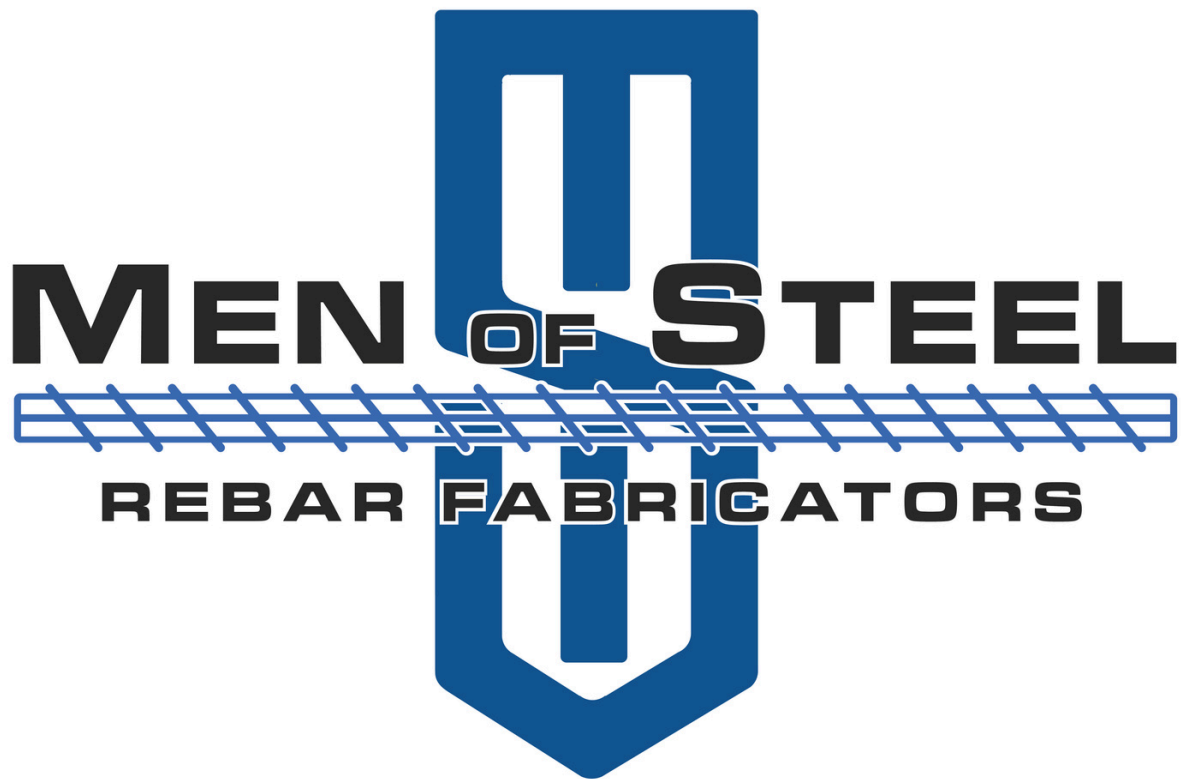
[TILCONNY.COM](http://TILCONNY.COM)

MAIN OFFICE: 1-800-789-7625

MATERIAL ORDERS: 1-855-659-1100

PEOPLE • CHARACTER • PERFORMANCE • INNOVATION





# Congratulations

Steve Crevani, Sr.

&

Steve Crevani, Jr.

on receiving this

Lifetime Achievement Award



**TANIS**  
**CONCRETE INC.**

**SUPPLYING PASSAIC, HUDSON  
AND BERGEN COUNTIES WITH  
PREMIUM CONCRETE.**

**Need concrete?**

Reliable, fast, and professional service —  
call us today for your residential, commercial,  
and industrial concrete needs!

**1-201-796-1556**



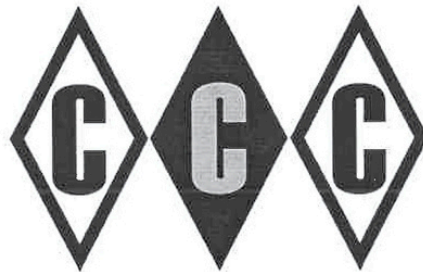
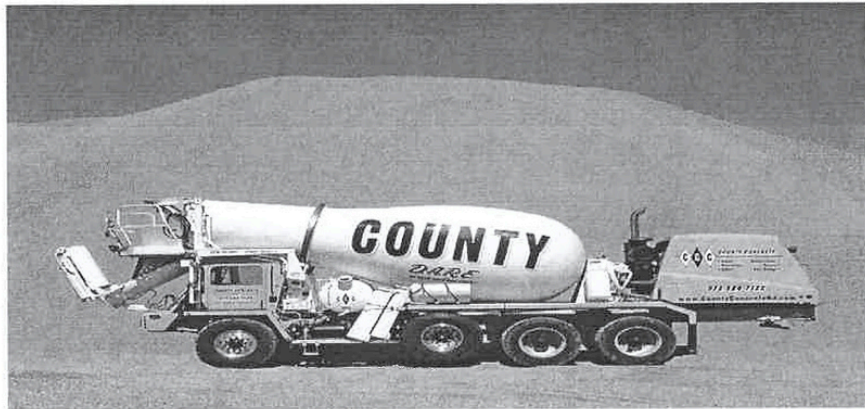
**CONGRATULATIONS TO STEVE CREVANI SR.  
AND STEVE CREVANI JR. OF FORSA CONSTRUCTION**

Proud to support your success and partnership.

*Congratulations!*

**Steve Crevani Sr. &  
Steve Crevani Jr.**

**Your Friends at County Concrete Corp Celebrate and  
Congratulate you !**



**County Concrete Corp.**

**Main: 973 - 584-7122**

**[www.countyconcretenj.com](http://www.countyconcretenj.com)**

**Kenvil**

**Oxford**

**Morristown**

**East Orange**

**Landi & Landscape Supply**

*Congratulations,*

*Steve Crevani Sr.*  
&

*Steve Crevani Jr.*

*Forsa Construction*

*From Your Friends at*



*Congratulations to  
Steve Crevani, Sr. &  
Steve Crevani, Jr.*



*State Line Construction Co., Inc.*

Quality • Reliability • Commitment

*Since 1977*

Concrete • Masonry • Excavation

[www.statelineco.com](http://www.statelineco.com)

Commercial • Industrial • Institutional

225 Pacific Street, Newark, NJ 07114  
Tel: 973-621-2828 • Fax: 973-621-9066

*Celebrating our 46<sup>th</sup> Anniversary*

# Congratulations to the 2025 Honorees Steve Crevani Sr. & Steve Crevani Jr.



210 Maple Place  
Keyport, New Jersey 07735  
732-888-8308 Fax 732-888-8307  
[www.keytechlabs.com](http://www.keytechlabs.com)

**CONSTRUCTION MATERIALS TESTING & INSPECTION**  
Patricia P. Strazza – President  
James J. McCarthy – Vice President  
Song Chen P.E. – V.P. Laboratory Director

## 62<sup>nd</sup> Annual New Jersey Concrete Awards

### Recognizing the Honorees:

Steve Crevani Sr & Steve Crevani Jr  
Forsa Construction LLC

The logo for Whibco Inc. features a large, white, stylized letter 'W' on the left, followed by the text "HIBCO INC." in a bold, white, sans-serif font.

**WHIBCO INC.**

A Sjögren Company

Industrial Sands & Aggregates. Since 1841.

For a complete list of products and the markets we service,  
visit [whibco.com](http://whibco.com) 87 East Commerce Street • Bridgeton, NJ 08302  
856.455.9200

ad made by [thirtydesigncompany@gmail.com](mailto:thirtydesigncompany@gmail.com)

**GREEK**  
DESIGN | BUILD

  
**RLCOLD**  
BGO

**CONCRETE AWARDS NOMINEE**  
**907 PLEASANT VALLEY AVE.**  
**MT. LAUREL TWP., NJ**

**CONGRATULATIONS**  
**TO THE HONOREES**



**Congratulations, Steve!**

From your friends at





JOHN DEERE



WIRTGEN

Ditch Witch®



TOPCON

GET  
**DOWN  
TO EARTH**

Congratulation to the honorees of the 62nd Annual New Jersey Concrete Awards:  
Steve Crevani, Sr. & Steve Crevani, Jr. of Forsa Construction LLC

[www.jesco.us](http://www.jesco.us)

800-241-7070



*Congratulations*

**HONOREES**

**STEVE CREVANI SR**

**STEVE CREVANI JR**

**FORSA CONSTRUCTION LLC**

**FROM YOUR FRIENDS AT  
TRAP ROCK INDUSTRIES, LLC**

LEARN ABOUT TRI  
SCAN HERE





**Vulcan**  
**Materials Company**

CONGRATULATIONS TO  
STEVE CREVANI, SR. &  
STEVE CREVANI, JR.

## *Awards Committee*

ART HOLDSWORTH  
(RETIRED-TILCON/MILLINGTON GROUP OF COMPANIES)

RICHARD AMBROSINO

ED PANUSKA

DAN WEBBER

MIKE WELLINS

KEVIN MONACO

The Awards Committee would like to thank those individuals that assisted with the solicitation of project nominations and the promotion of tonight's dinner.



OFFICERS OF THE NEW JERSEY CHAPTER, AMERICAN CONCRETE INSTITUTE

BHAVIK SHAH  
PRESIDENT

DAN WEBBER  
EXECUTIVE DIRECTOR

OFFICERS OF THE NEW JERSEY CONSTRUCTION MATERIALS ASSOCIATION

SCOTT BRAEN  
PRESIDENT

KEVIN MONACO  
EXECUTIVE DIRECTOR

*Awards Judges*

JAMES STARACE  
HNTB

MICHAEL WALLACE  
LIRO-HILL

ROBERT FISCHER  
NJ TURNPIKE AUTHORITY

*Master of Ceremonies*

CARLI C. HAAS  
RALPH CLAYTON & SONS

# *Notes*

---

# *Previous Grand Award Winners*

- 1967 Campus Center, Rutgers University, Newark
- 1968 Science & Humanities Building, Rutgers University, Newark
- 1969 Corn Products Company Headquarters, Englewood Cliffs
- 1970 Eastern Airlines Reservations Center, Woodbridge
- 1971 Gateway One, Newark
- 1972 Schering Corporation Office Building, Kenilworth
- 1973 Harold C. Bohn Dormitory, Montclair State College, Upper Montclair
- 1974 Bergen Community College, Paramus
- 1975 Concrete Cooling Tower, Beesley's Point Generating Station
- 1976 The Prudential Insurance Company of America, Woodbridge
- 1977 PATH Journal Square Transportation Center, Jersey City
- 1978 The Galaxy, Guttenberg
- 1979 The Hospital at the NJ College of Medicine & Dentistry, Newark
- 1980 The Howard Savings Bank Operations Center, Phase I, Livingston
- 1981 Edison Municipal Complex, Edison
- 1982 Blanton Residence Hall, Montclair State College, Upper Montclair
- 1983 Selected Risk Insurance Company, Branchville
- 1984 Connell Corporate Center, Berkeley Heights
- 1985 Corporate Office Facility, Florham Park
- 1986 The Enclave, Atlantic City
- 1987 Tropicana Parking Garage, Atlantic City
- 1988 International Crossroads, Mahwah
- 1989 The Regency, Atlantic City
- 1990 U.S. Navy Ammunition Pier & Trestle, Leonardo
- 1991 Ocean Place Hilton, Long Branch
- 1992 The New Jersey State Aquarium, Camden
- 1993 Schering-Plough Drug Discovery Facility, Kenilworth
- 1994 Ciba-Geigy Life Science Building, Summit

## *Previous Grand Award Winners*

- 1995 Bayshore Regional Sewerage Authority Expansion,
- 1996 Union Beach TropWorld West Tower,
- 1997 Atlantic City The Grove Street Bridge,
- 1998 Somerville New Jersey Performing Arts Center,
- 1999 Newark Morris County Correctional Facility,
- 2000 Morristown A.M. Best Corporate Headquarters Expansion,
- 2001 Oldwick New Jersey Korean War Memorial,
- 2002 Atlantic City Newark Air Traffic Control Tower,
- 2003 Newark Ocean City-Longport Bridge Replacement,
- 2004 Ocean City Secaucus Transfer and Lautenberg Station,
- 2005 Secaucus Victory Bridge Replacement,
- 2006 Perth Amboy/Sayreville Secaucus Interchange Seaview Drive Ramp,
- 2007 Secaucus Weehawken Ferry Terminal
- 2008 Weehawken Becton Dickinson Campus Center
- 2009 Franklin Lakes September 11 Memorial Bridge
- 2010 Brick Township Rosedale Road Bridge over Stony Brook
- 2011 Princeton Rt. 18 Rehabilitation,
- 2012 New Brunswick Mullica River Bridge & NB Widening,
- 2013 Port Republic Revel Entertainment Hotel Casino Resort
- 2014 Atlantic City Kean University Green Lane Building
- 2015 Union The Lewandowski Memorial Hackensack River Bridge
- 2016 Hudson County Harborside Plaza VII
- 2017 Jersey City Garden State Parkway Replacement of Structures over Great Egg Harbor Bay
- 2018 Egg Harbor Twp. Goethals Bridge Replacement Project
- 2019 Elizabeth 99 Hudson Street, Jersey City
- 2020 American Dream, Englewood Cliffs 351 Marin, Jersey City
- 2022 Newark International Airport, Terminal A, Newark
- 2023 Scudder Falls Bridge, Ewing Township, NJ – Lower Makefield, PA
- 2024 Raritan River Bridge Replacement, Perth Amboy

*Previous  
Honorees*

*Lifetime Achievement Award*

*2006*

Pete Loizeaux & Harry Capers

*2007*

Pat Diccianni  
Bill Clayton, Sr. &

*2008*

Jim Pasch & Gary Mahan

*2009*

Bob Demas & Reginald Hough

*2010*

Bob Epifano & Vincent Gallo

*2011*

Bill Phelan & Nat Conti

*2012*

George Harms  
Casimir Bognacki &

*2013*

Jack Macedo & Ed Finkel

*2014*

Dianne Johnston &  
Antonio Vazquez, Sr.

*2015*

John L. Silvi,  
Laurence J. Silvi II &  
Roy Olsen

*2016*

Jack Lettiere &  
J. Fletcher Creamer, Jr.

*2017*

Richard Raczynski  
William J. Sandbrook &

*2018*

Dr. Hani Nassif  
Eustace "Gus" Anselmi &

*2019*

Linwood Gerber &  
Euclides Domingues

*2020*

William F. Layton

*2022*

Joe Scaramuzzo &  
Robert Fischer

*2023*

Frank Greek, Glenn Morrow &  
Anthony Curiale

*2024*

Tom Hardell & Joe Marsano

## NOMINATIONS FOR THE 63<sup>RD</sup> ANNUAL NJ CONCRETE AWARDS NOW BEING ACCEPTED

The Dinner Awards Committee recognizes there is a substantial amount of time between this year's Awards Dinner and next year's nomination process. If you would like to nominate a project already completed in 2025, you may do so now.

Please contact NJACI or NJCMA to submit a project.

## *Advertiser's Index*

<b>Advertiser</b>	<b>Page</b>
Black Rock Enterprises	48
Boraie Development, LLC	67
Braen	49
Bricklayers and Allied Craftworkers Administrative District Council of NJ Locals No. 4 & 5	50
Clayton Concrete and Sand	64
Concrete Systems	51
County Concrete	63
Crevani Family	9
Earle Companies	52
ELEC 825	53
Furino & Sons Inc.	13
George Harms Construction	54
Greek Design/Build	67
Jesco	68
KeyTech	66
Madison Concrete Construction	55
Men of Steel	61
North East Remso Construction	11
Penntex	56

## *Advertiser's Index*

<b>Advertiser</b>	<b>Page</b>
Petillo Companies	57
Silvi Materials	58
SRM Concrete	12
State Line Concrete Construction Inc.	65
Stavola	59
Tanis Concrete, Inc.	62
Tilcon	60
Trap Rock Industries	68
ULMA Formwork	69
Vulcan Materials Company	69
Weldon Concrete Co.	10
Whibco, Inc.	66

# **62<sup>nd</sup> Annual New Jersey Concrete Awards** **Recognizing the creative use of concrete in New Jersey**



**New Jersey Chapter of the American Concrete Institute**  
**PO Box 3404**  
**Jersey City, NJ 07303**  
**Phone: (609) 577-9044**  
**[www.NJACI.com](http://www.NJACI.com)**

**New Jersey Concrete Materials Association**  
**PO Box 641**  
**Manasquan, NJ 08736**